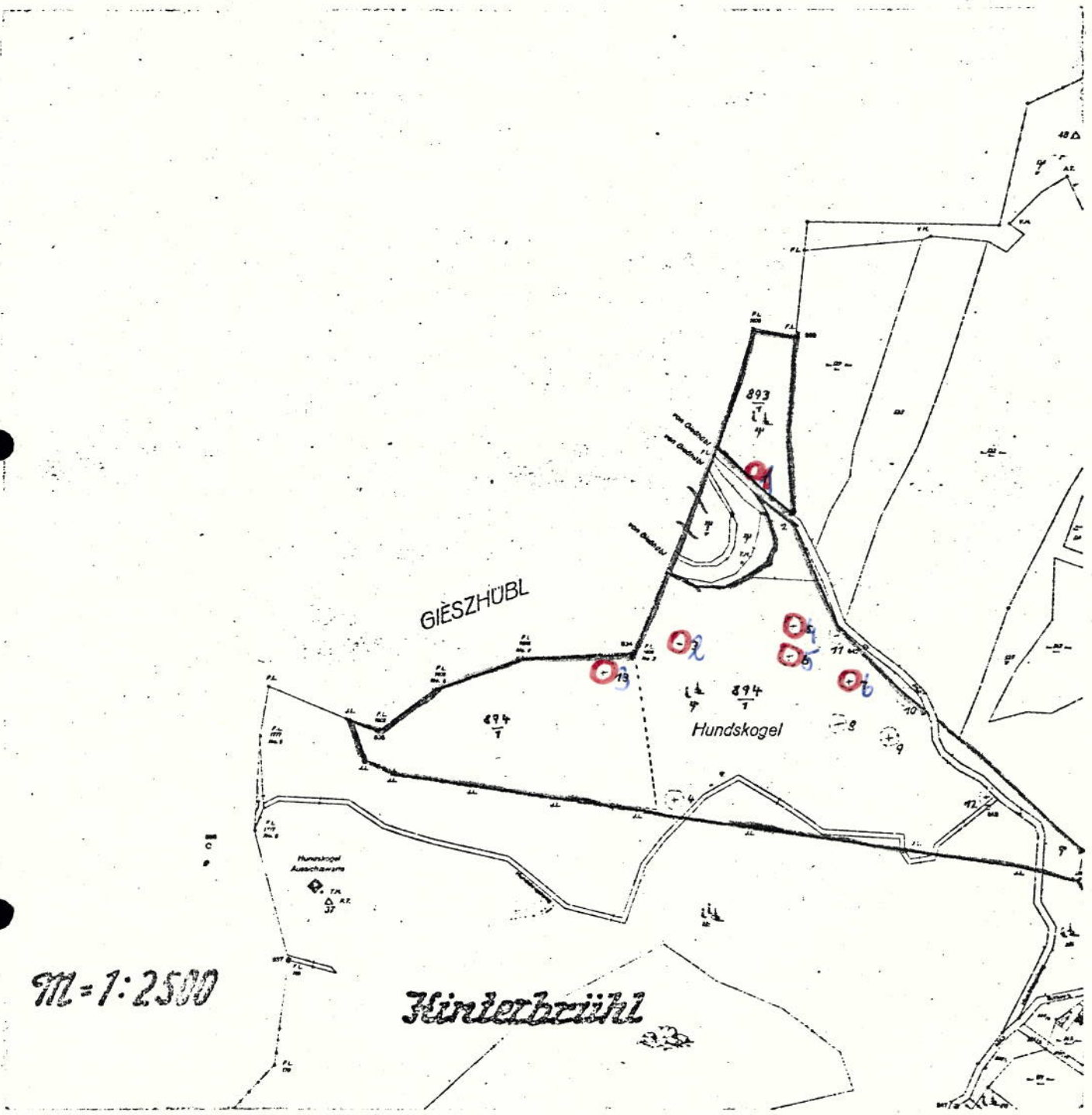


*Naturschutzakt*

N.S. 786/7-0  
Beilage  
zu Abz. W/8 Zl. 1. 13-1379/42



H.P. ...  
8st. 893/1  
6st. 894/1

*Hauptabteilung Landesamt, Abt. G. 15*  
*Stadtplanung*

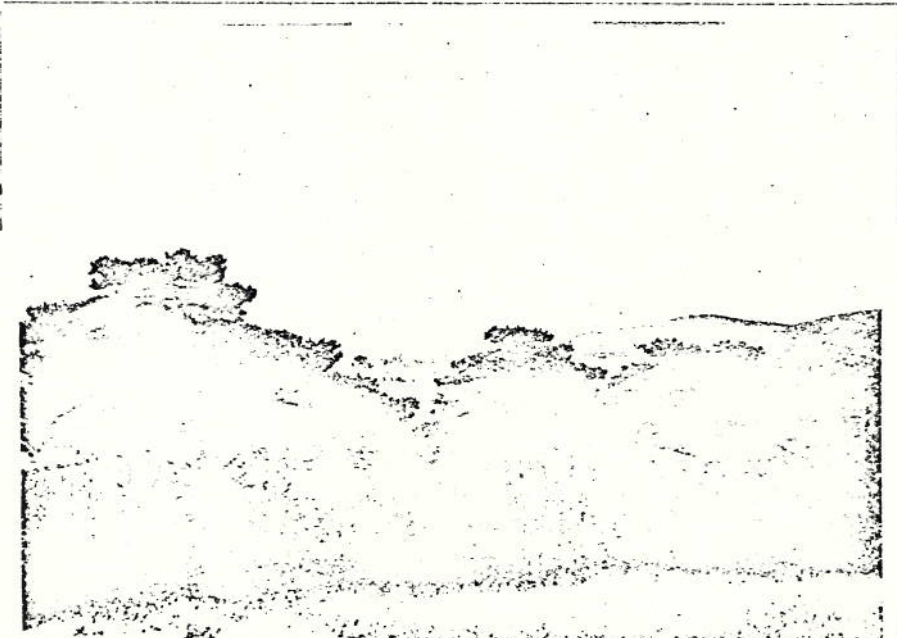
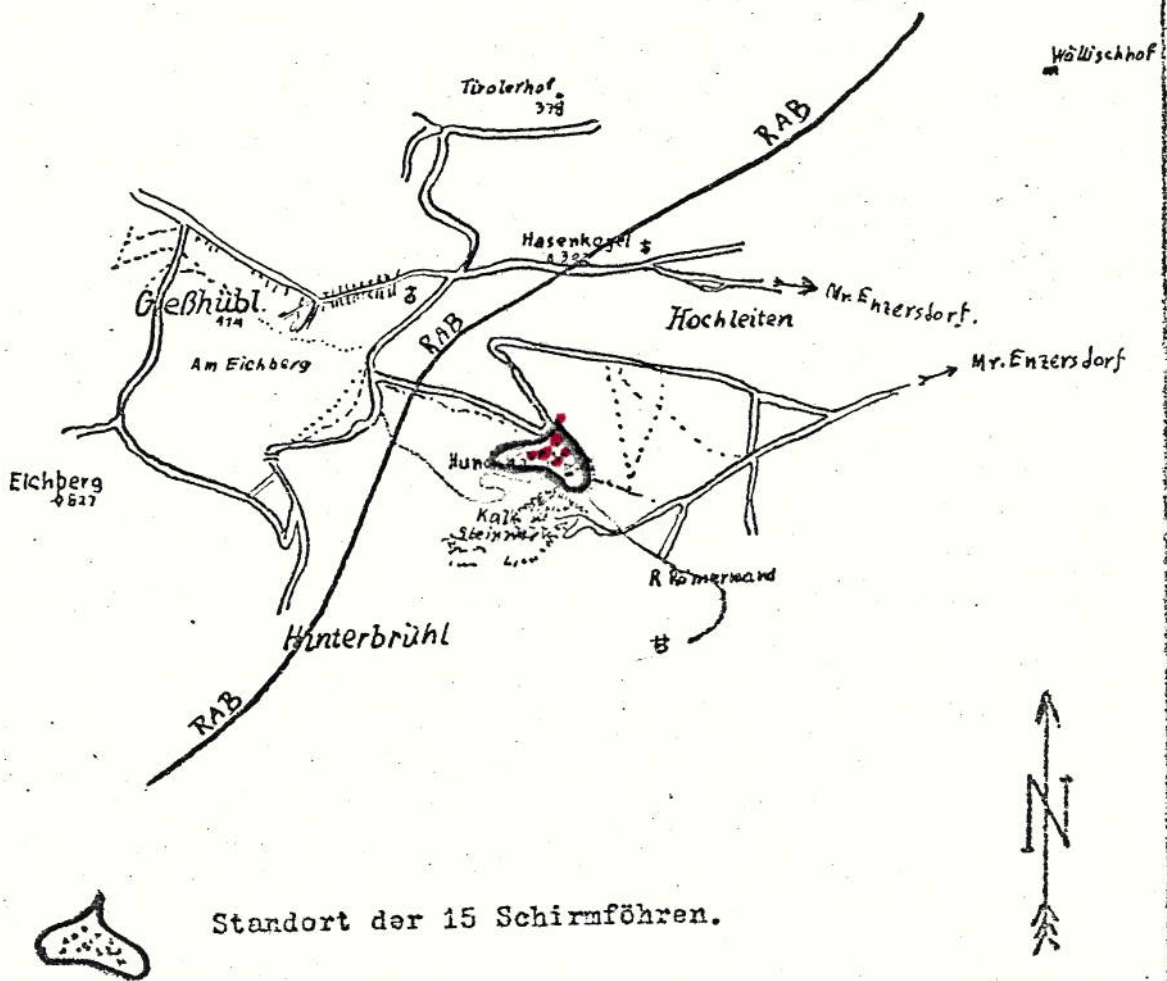
Legende unseitig!

f.d. Abteilungsversand:

i.a. *E. ...*

Pause zur Österreichischen Karte 1:25.000, Blatt 58/4 Baden.

Gemeinde Hinterbrühl, E.Z. 502.







Gst.: 893/1: Nr. 1 = Schirnföhre, U = 1.20 m

Gst.: 894/1:

Nr. 2 = Schirnföhre,	U = 1.30	Nr. 3 = Schirnföhre,	U = 1.00
" 3 = "	" = 1.30	" 4 = "	" = 1.00
" 4 = "	" = 2.00	" 5 = "	" = 2.00
" 5 = "	" = 1.10	" 6 = "	" = 1.10
" 6 = "	" = 1.30	" 7 = "	" = 1.10
" 7 = "	" = 1.00	" 8 = "	" = 1.00

~~Messung G 40, Stadtkarte  
1:25000  
Verz.~~